

PIPE CLAMPS with Muscle for Extreme Reforming Requirements



Since 1936

MATHEY DEARMAN

Smarter. Tougher. Mathey.

Rim & Mega Rim Clamps

- Align and reform high tensile strength pipe including X65, X70 and X80 with wall thicknesses up to 7/8"
- Reform pipe out-of-round condition up to 2"
- The Hinged Flip-up Jackbars allow a complete 360° weld while the clamp is fully engaged
- For use with Carbon/Stainless/Titanium pipes or shells - all surfaces that come in contact with the pipe are made of stainless steel.
- Standard sizes from 4" OD – 72" OD Standard, larger sizes available upon request

800-725-7311 | 918-447-1288 | sales@mathey.com

Rim Clamps

All Rim Clamps Include:

- Parts And Operating Manual
- Jackscrews With Swivel Pads
- Jackscrew Wrench
- Level and Support Device Is Available as an Option

RIM CLAMPS			
Model Part No.	Reforms Pipes To Schedule	Aligns Pipes To Schedule	Pipe Size Range (in/mm)
D711-0406	80	120	4-6 / 102-152
D711-0608	80	120	6-8 / 152-203
D711-0810	80	120	8-10 / 203-254
D711-1012	80	120	10-12 / 254-305
D711-1214	80	120	12-14 / 305-356
D711-1416	80	120	14-16 / 356-508
D711-1618	80	120	10-54 / 254-1372
D711-1420	80	120	14-20 / 356-508
D711-1824	80	120	18-24 / 457-610
D711-2026	80	120	20-26 / 508-660
D711-2228	80	120	22-28 / 559-711
D711-2632	80	120	26-32 / 660-813
D711-3036	80	120	30-36 / 762-914
D711-3440	80	120	34-40 / 864-1016
D711-3844	80	120	38-44 / 965-1118
D711-4248	80	120	42-48 / 1067-1219
D711-4450	80	120	44-50 / 1118-1270
D711-4652	80	120	46-52 / 1168-1321
D711-5056	80	120	50-56 / 1270-1422
D711-5460	80	120	54-60 / 1372-1524
D711-5864	80	120	58-64 / 1473-1626
D711-6268	80	120	62-68 / 1575-1727
D711-6672	80	120	66-72 / 1676-1829

Mega Rim Clamps

All Mega Rim Clamps Include:

- Parts And Operating Manual
- Jackscrews With Swivel Pads
- Jackscrew Wrench
- Level and Support Device Is Available as an Option

MEGA RIM CLAMPS FOR HIGH TENSILE STRENGTH PIPE			
Model Part No.	Reforms Pipes To Schedule	Aligns Pipes To Schedule	Pipe Size Range (in/mm)
D711-0608M	80	120	6-8 / 152-203
D711-0810M	80	120	8-10 / 203-254
D711-1012M	80	120	10-12 / 254-305
D711-1214M	80	120	12-14 / 305-356
D711-1416M	80	120	14-16 / 356-508
D711-1618M	80	120	10-54 / 254-1372
D711-1420M	80	120	14-20 / 356-508
D711-1824M	80	120	18-24 / 457-610
D711-2026M	80	120	20-26 / 508-660
D711-2228M	80	120	22-28 / 559-711
D711-2632M	80	120	26-32 / 660-813
D711-3036M	80	120	30-36 / 762-914
D711-3440M	80	120	34-40 / 864-1016
D711-3844M	80	120	38-44 / 965-1118
D711-4248M	80	120	42-48 / 1067-1219
D711-4450M	80	120	44-50 / 1118-1270
D711-4652M	80	120	46-52 / 1168-1321
D711-5056M	80	120	50-56 / 1270-1422
D711-5460M	80	120	54-60 / 1372-1524
D711-5864M	80	120	58-64 / 1473-1626
D711-6268M	80	120	62-68 / 1575-1727
D711-6672M	80	120	66-72 / 1676-1829

Please provide us with the following information in order to specify the correct Rim Clamp for your application.

1. Pipe diameter (inches or millimeters)

2. Pipe wall thickness (inches or millimeters)

3. Pipe tensile strength and/or type of material

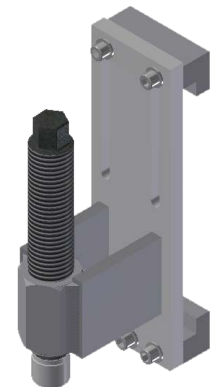
4. Horizontal or vertical application

5. Ambient temperature

WARNINGS:

CONTACT MATHEY DEARMAN WHEN PIPE IS CLAD WITH MATERIALS SUCH AS ICONEL OR TITANIUM. AS TEMPERATURES FALL BELOW 0 DEGREES FARENHEIT (-18 CELCIUS), REFORMING CAPABILTY RAPIDLY DECREASES.

NEW:
Add-on Jackbar Accessory!



DR-900	Mega Rim Add-on Jackbar	14-72 / 356-1829
DR-901	Std. Rim Add-on Jackbar	14-72 / 356-1829

Accessories

RIM & MEGA RIM CLAMP ACCESSORIES AND PARTS		
Model Part No.	Description	Rim Clamp Range (in/mm)
DR-300	Jackbars	4-14 / 102-356
DR-700	Jackbars	14-72 / 356-1829
DR-400	Jackbar Pin	4-14 / 102-356
DR-800	Jackbar Pin, Large	4-72 / 102-356
DC-501	Jackscrews	4-14 / 102-356
DR-500	Jackscrews	14-72 / 356-1829
D900-002	Wrench (3/4", 19mm)	4-14 / 102-356
D900-003	Wrench (7/8", 22.2mm)	14-72 / 356-1829
DA-400S	Level & Support Device	4-8 / 102-203
DB-400S	Level & Support Device	4-20 / 102-508
DC-400	Level & Support Device	18-72 / 457-1829
DC-400S	Level & Support Device	18-72 / 457-1829



4344 S Maybelle Ave
 Tulsa, Oklahoma 74107 USA
 800-725-7311 918-447-1288
 fax 918-447-0188
 sales@mathey.com