

Universal Chain Clamps

- Reforms pipe to Schedule 20 and aligns pipe to Schedule 40
- Swivel-foot Jackscrews help ensure precise alignment by securely holding on uneven pipe surfaces
- Jackbars can be adjusted to relocate the contact point of Jackscrews for extra support of mating pipe or fittings
- A single Universal Chain Clamp covers the same range as 8 cage clamps

WARNING: THE UNIVERSAL CHAIN CLAMP SHOULD NEVER BE USED AS THE SOLE SUPPORT FOR THE PIPE OR TO LIFT THE PIPE. DO NOT EXCEED PIPE SIZE RANGE LISTED OR USE ANY TYPE OF CHAIN OTHER THAN SUPPLIED WITHOUT FIRST CONTACTING THE MATHEY DEARMAN SALES DEPARTMENT. USE OF CHAIN NOT SUPPLIED WITH THE CLAMP BY MATHEY DEARMAN WILL VOID THE CLAMP WARRANTY.

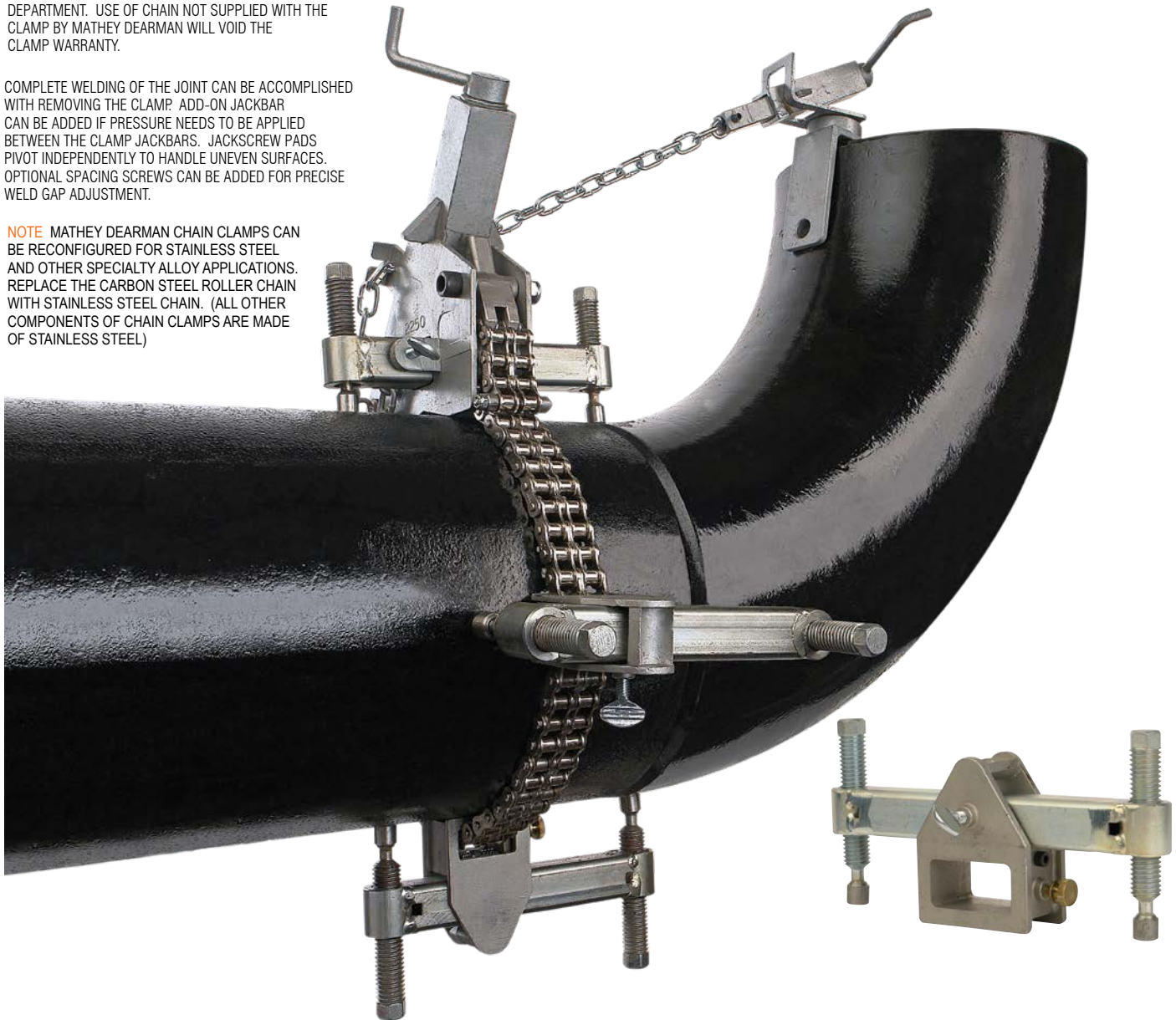
COMPLETE WELDING OF THE JOINT CAN BE ACCOMPLISHED WITH REMOVING THE CLAMP. ADD-ON JACKBAR CAN BE ADDED IF PRESSURE NEEDS TO BE APPLIED BETWEEN THE CLAMP JACKBARS. JACKSCREW PADS PIVOT INDEPENDENTLY TO HANDLE UNEVEN SURFACES. OPTIONAL SPACING SCREWS CAN BE ADDED FOR PRECISE WELD GAP ADJUSTMENT.

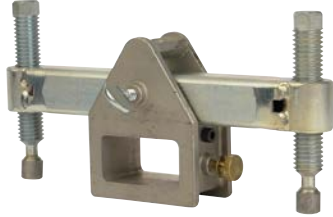
NOTE MATHEY DEARMAN CHAIN CLAMPS CAN BE RECONFIGURED FOR STAINLESS STEEL AND OTHER SPECIALTY ALLOY APPLICATIONS. REPLACE THE CARBON STEEL ROLLER CHAIN WITH STAINLESS STEEL CHAIN. (ALL OTHER COMPONENTS OF CHAIN CLAMPS ARE MADE OF STAINLESS STEEL)

UNIVERSAL CHAIN CLAMPS								
Model Part No.	No Of Jackbars	Reforms Pipes To Schedule	Aligns Pipes To Schedule	Pipe Size Range (in/mm)	Shipping Weight		Shipping Dimensions	
					lbs	kg	in	mm
D2250	3	20	40	1-8 / 25-203	25.0	11.3	23x10x9	584x254x229
D2250SS	3	20	40	1-8 / 25-203	25.0	11.3	23x10x9	584x254x229
D2249	7	20	40	4-16 / 102-406	70.0	31.5	30x10x15	762x254x381
D2249SS	7	20	40	4-16 / 102-406	70.0	31.5	30x10x15	762x254x381
D2235	8	20	40	10-36 / 254-914	145.0	65.3	30x10x15	762x254x381
D2235SS	8	20	40	10-36 / 254-914	145.0	65.3	30x10x15	762x254x381

All Universal Chain Clamps Include:		
• Length Of Chain Required For The Pipe Range	• Level And Support Device	• Parts And Operating Manual
• Single Jackscrew Jackbars Listed For The Pipe Range	• Jackscrew Wrench	• Jackscrews With Swivel Pads
• Main Block	• Storage Box	• Carbon or Stainless Spacing Screws Available as Options
• Fine Adjustment		

* Calculations are based on pipe with a tensile strength of 45,000 lbs per square inch (3,164 kg per square centimeter).
SS - Indicates clamp is for stainless steel application





SPACING SCREWS FOR UNIVERSAL JACKBARS

Part No.	For Clamp Models	Shipping Weight		Shipping Dimensions	
		lbs	kg	in	mm
DA-870	D2250	0.2	0.1	6x6x4	152x152x102
DA-870S	D2250SS	0.2	0.1	6x6x4	152x152x102
DB-870	D2249	0.3	0.1	6x6x4	152x152x102
DB-870S	D2249SS	0.3	0.1	6x6x4	152x152x102
DC-870	D2235	0.3	0.1	6x6x4	152x152x102
DC-870S	D2235SS	0.3	0.1	6x6x4	152x152x102

JACKBARS

Part No.	For Clamp Models	Shipping Weight		Shipping Dimensions	
		lbs	kg	in	mm
DA-800	D2250	2.0	0.9	12x10x8	305x254x203
DB-800	D2249	3.0	1.4	12x10x8	305x254x203
DC-800	D2235	4.0	1.8	12x10x8	305x254x203

JACKSCREWS

Part No.	For Jackbars or Main Blocks	Shipping Weight		Shipping Dimensions	
		lbs	kg	in	mm
DA-701	DA-800, DB-800	0.3	0.1	6x6x4	152x152x102
DC-501	DC-800	0.6	0.3	6x6x4	152x152x102

MAIN BLOCKS

Part No.	For Chain Clamp	Shipping Weight		Shipping Dimensions	
		lbs	kg	in	mm
DA-100	D2250, D2250SS	3.0	1.4	12x10x8	305x254x203
DB-100	D2249, D2249SS	7.0	3.2	12x10x8	305x254x203
DC-100	D2235, D2235SS	13.0	5.9	12x10x8	305x254x203

FINE ADJUSTMENT

Part No.	For Chain Clamp	Shipping Weight		Shipping Dimensions	
		lbs	kg	in	mm
DA-200	D2250, D2250SS	1.0	0.5	6x6x4	152x152x102
DB-200	D2249, D2249SS	3.0	1.4	6x6x4	152x152x102
DC-200	D2235, D2235SS	4.0	1.8	12x10x6	305x254x152

LEVEL AND SUPPORT DEVICE

Part No.	For Chain Clamp	Shipping Weight		Shipping Dimensions	
		lbs	kg	in	mm
DA-400S	D2250, D2250SS	2.0	0.9	6x6x4	152x152x102
DB-400S	D2249, D2249SS	5.0	2.3	6x6x4	152x152x102
DC-400	D2235 Series (Carbon Steel)	14.0	6.3	12x10x6	305x254x152
DC-400S	D2235SS Series (Stainless Steel)	14.0	6.3	12x10x6	305x254x152

CHAIN (PRICE PER FOOT)

Part No.	For Chain Clamp	Shipping Weight		Shipping Dimensions	
		lbs	kg	in	mm
DA-300	D2250	1.0	0.5	6x6x4	152x152x102
DA-300S	D2250SS	1.0	0.5	6x6x4	152x152x102
DB-300	D2249	2.0	0.9	12x10x6	305x254x152
DB-300S	D2249SS	2.0	0.9	12x10x6	305x254x152
DC-300	D2235 Series (Carbon Steel)	4.0	1.8	12x10x8	305x254x203
DC-300S	D2235SS Series (Stainless Steel)	4.0	1.8	12x10x8	305x254x203

CONNECTING LINK

Part No.	For Chain Clamp	Shipping Weight		Shipping Dimensions	
		lbs	kg	in	mm
DA-301	D2250, D2250SS	0.1	0.0	6x6x4	152x152x102
DB-301	D2249	0.1	0.0	6x6x4	152x152x102
DB-301S	D2249SS	0.1	0.0	6x6x4	152x152x102
DC-301	D2235 Series (Carbon Steel)	0.3	0.1	6x6x4	152x152x102
DC-301S	D2235SS Series (Stainless Steel)	0.3	0.1	6x6x4	152x152x102

CHAIN CLAMP STORAGE BOXES

Part No.	For Clamp Models	Shipping Weight		Shipping Dimensions	
		lbs	kg	in	mm
D862	D2235	26.0	11.7	29x10x14	773x254x349
D864	D2250, D2249	8.0	3.6	22x8.5x9	559x216x222