



P. O. Box 472110, Tulsa, OK 74147-2110 USA
 Toll Free: 800-725-7311
 918-447-1288 Office
 918-447-0188 Fax
www.mathey.com

FLANGE LINE UP PINS

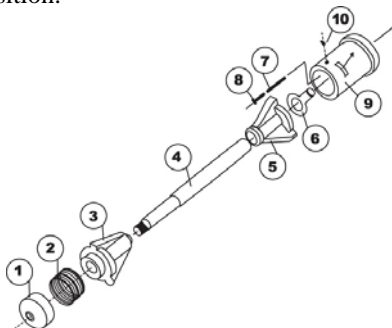
A pair of **Mathey Dearman Flange Line Up Pins** (each sold separately) and a spirit level will provide quick and precise two-hole horizontal alignment of flanges for welding. The stainless steel cone shaped end piece automatically centers the Flange Line Up Pin and will fit 5/8" to 1 7/8" flange bolt holes. Expansion spring allows the Flange Line Up Pin to give as the flange expands during the preheating or welding process. FLUPS are available in both Slide Locking and Wobble Nut.

Slide-Lock Locking

The Slide-Lock Locking ends slip on and off quickly and easily, and facilitates quick movement from flange to flange – especially when “tacking only” for the first pass.



Directions for Use: Push the lock toward the cone of Flange Line Up Pin. Slide the level head off of the FLUP shaft. Insert the shaft of the FLUP into the bolt holes of the flange and reinsert the level head. Push on both ends of the FLUP until the spring is compressed 1/8 to 3/16 of an inch. A bubble level is then placed on the level head of the Flange Line Up Pins. Adjust the flange until the bubble indicates a level position.

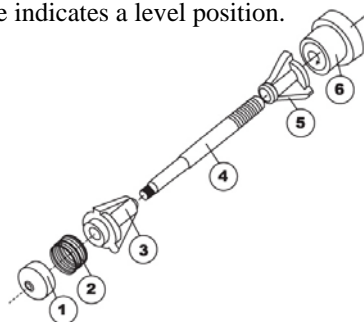


Wobble Nut

Only 1 1/2 turns to the Wobble Nut and you are ready to go.



Directions for Use: Unscrew Wobble Nut from flange Line Up Pin shaft. Remove the centering cone from Flange Line Up Pin into the bolt hole of the flange. Insert the center cone on the Flange Line Up Pin shaft. Tilt the Wobble Nut at a slight angle to the shaft of the Flange Line Up Pin until it contacts the center cone. Turn the Wobble Nut until it compresses the release spring 1/8 to 3/16 of an inch. A bubble level is then placed on the level head of the Flange Line Up Pin. Adjust the flange until the bubble indicates a level position.



ITEM NO.	PART DESCRIPTION	PART NO.	QUANT. REQ'D.	ITEM NO.	PART DESCRIPTION	PART NO.	QUANT. REQ'D.
SHAFT ASSEMBLY				SHAFT ASSEMBLY			
1	Spring Cap	05-0100-006	1	1	Spring Cap	05-0100-006	1
2	Release Spring	01-0183-005	1	2	Release Spring	01-0183-005	1
3	Centering Cone	05-0100-005	1	3	Centering Cone	05-0100-005	1
4	Shaft	05-0100-001	1	4	Shaft	05-0100-008	1
SLIDE LOCK LEVEL HEAD ASSEMBLY				5			
5	Centering Cone - grooved	05-0100-004	1	5	Centering Cone-grooved	05-0100-004	1
6	Lock	05-0100-003	1	SLIP LOCK THREAD NUT			
7	Lock Spring	01-0183-004	1	6	Wobble Nut	05-0100-011	1
8	Lock Spring Pin	01-0259-001	1				
9	Level Head	05-0100-002	1				
10	Set Screw, No. 6-32 Cup Point	19-06C0-036	3				



C.I.A. Mathey Italiana S.r.l.
 Via Isonzo, 26 - 20050 S. Damiano di Brugherio (MI)
 Phone: +39 039 831019/2020021 • Fax: +39 039 2020079
ciamathey@promo.it • www.ciamathey.com